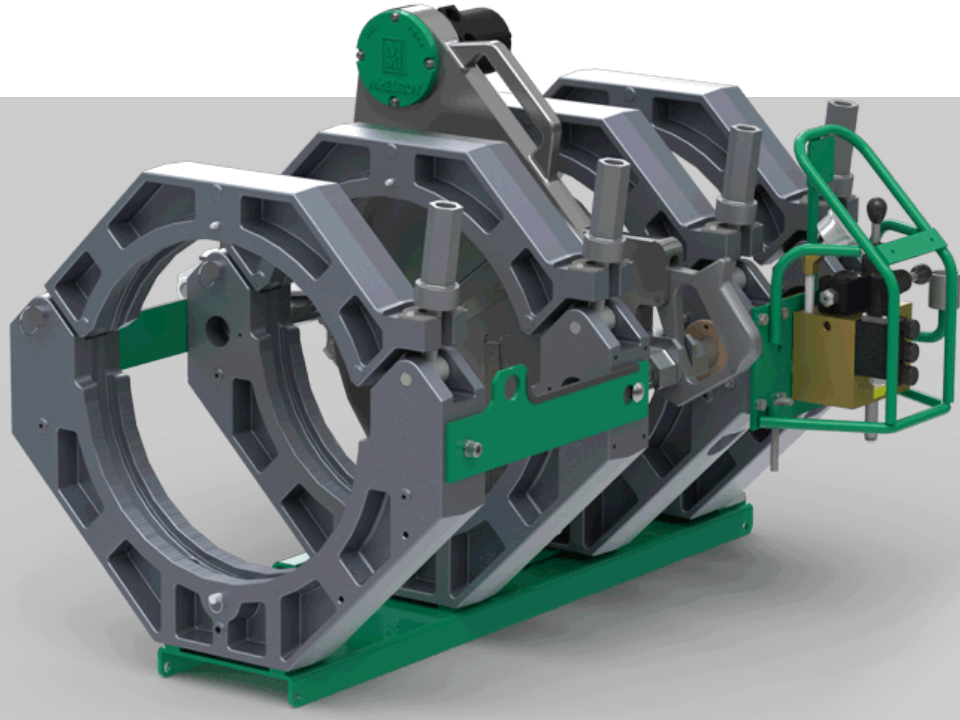


## BUILT FOR THE DITCH

The Pit Bull is the workhorse of the McElroy machine line with a marked level of endurance. The carriage alone provides all the muscle you need to fuse small- and medium- diameter pipe when wheeled- and track-mounted vehicles are not necessary. The carriage, heater, insulated heater stand and Hydraulic Power Unit (HPU) are separate components that can be situated in various arrangements to allow flexibility in confined environments.



## RUGGED & RELIABLE

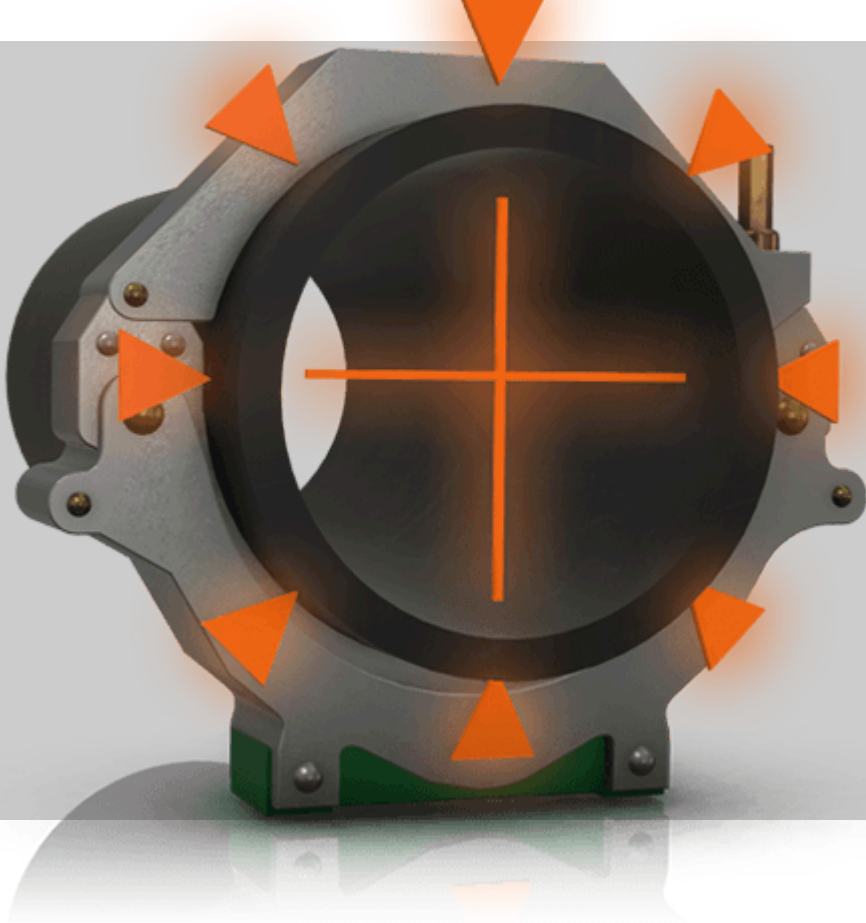
READY FOR THE TOUGHEST JOBS

The Pit Bulls are capable of fusing pipe all day long with consistent, high-quality results. They offer the same power of any same-sized rolling or tracked fusion machine, and most will conveniently fit on any of McElroy's wheeled or tracked vehicles. All of the McElroy Pit Bulls feature serrated jaws and inserts to keep the pipe from slipping during fusion. When jobs are down and dirty, the Pit Bull is your go-to machine.

## SMALL FOOTPRINT

DESIGNED FOR TIGHT SPACES

Compact and portable, the Pit Bull carriage is built specifically for pipe fusion in the trenches. On tight installations, the medium-diameter machines can be converted from a four-jaw to a three-jaw carriage for an even more compact fusion unit in the ditch. The smaller-diameter models are made primarily of surface-hardened aluminum which makes it durable yet light weight so that it can be physically carried from joint to joint.



## CONSISTENT JOINT QUALITY

PATENTED CENTERLINE GUIDANCE PROVIDES EQUAL DISTRIBUTION OF FORCE

Centerline Guidance is a balanced force system that is unique to all McElroy machines. It places the centerline of the pipe clamping jaws on the same plane as the pipe's centerline. The force applied during the fusion passes through the center of the pipe, producing an equal distribution of force around the diameter of the pipe which results in an even, continuous bead formation and quality joint.

## DATALOGGER® COMPATIBLE\*

RECORD & ANALYZE FUSION JOINT DATA

The medium-diameter Pit Bull machines are compatible with the McElroy DataLogger, a handheld computer that records and documents the key parameters of the fusion process. These joint records are used to verify that proper fusion procedures have been followed prior to installation, which is a growing jobsite requirement. Joint records from the DataLogger can be stored and analyzed in the Vault™, a secure server on the internet. This allows quick and easy sorting, tagging and sharing of joint records by machine, joint, operator, device or job.

[Learn More](#)

\* Pit Bull 14 and Pit Bull 26 are not DataLogger compatible



## INDUSTRY-LEADING WARRANTY

GUARANTEED PERFORMANCE

McElroy equipment is built to withstand the tough environments our industry encounters. We're confident that your machine will perform to the best of its capabilities. We've even given each piece of equipment a 5-year warranty — the longest available in the industry.

[Learn More](#)

## ADDITIONAL FEATURES

	Pit Bull 14	Pit Bull 26	Pit Bull 28	Pit Bull 250	Pit Bull 412	Pit Bull 618
Patented Centerline Guidance System for equal distribution of force around the joint	✓	✓	✓	✓	✓	✓
Semi-automatic locking cam system maintains force during cooling	✓	✓				
Hard-anodized aluminum wear surfaces for corrosion resistance	✓	✓	✓	✓	✓	✓
Serrated jaws and inserts keep pipe from slipping during fusion	✓	✓	✓	✓	✓	✓
Thrust-bearing-equipped clamp knobs to minimize force required to clamp and round pipe	✓	✓	✓	✓	✓	✓
Advanced blade design for smooth face and long life	✓	✓	✓	✓		✓
Lightweight heater design with 45-degree handle to prevent overheating	✓	✓	✓	✓		
Microprocessor-controlled heater	✓	✓	✓	✓	✓	✓
ISO-compliant industrial Teflon-coated heater plates	✓	✓	✓	✓	✓	✓
Reversible jaws, clamp knobs, levers and facer allow operator to fuse from either side of the machine	✓	✓				
Removable 3- or 4-jaw carriage for close quarter use			✓	✓	✓	✓
High-force cylinder machine available			✓		✓	✓
Medium-force cylinder machine available					✓	✓
Low-force cylinder machine available			✓	✓	✓	✓
DataLogger® compatible			✓	✓	✓	✓
Powerful hydraulic facer for facing the toughest pipe			✓	✓	✓	✓
Industry standard semi-automatic hydraulic control system			✓	✓	✓	✓
Available in Combination Unit (CU) for sidewall fusion			✓	✓		
Hydraulic clamping available					✓	✓

## MODELS

Select a machine below for more detailed specifications and model-specific features.



**PIT BULL® 14**  
1" IPS - 4" DIPS (32mm - 102mm)  
Built For The Ditch

[Learn more about Pit Bull® 14](#)



**PIT BULL® 26**  
2" IPS - 6" DIPS (51mm - 152mm)  
Built For The Ditch

[Learn more about Pit Bull® 26](#)



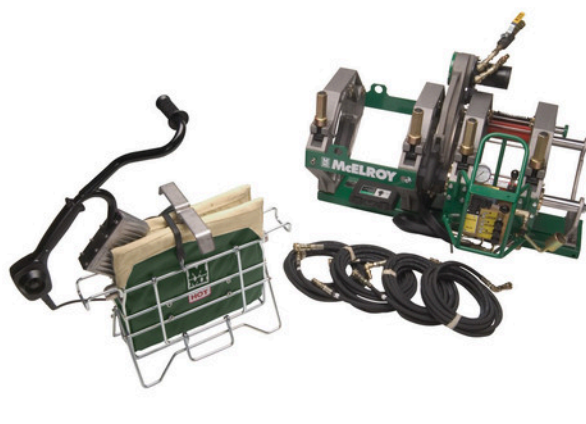
**PIT BULL® 250**  
2" IPS - 8" DIPS (51mm - 203mm)  
Built For Tight Spaces

[Learn more about Pit Bull® 250](#)



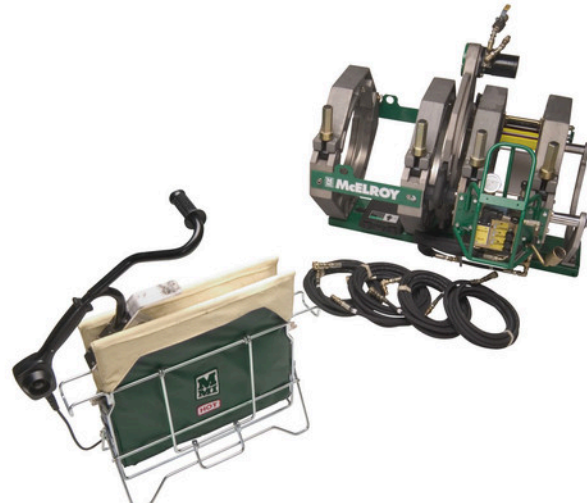
**PIT BULL® 28**  
2" IPS - 8" DIPS (51mm - 203mm)  
Built For The Ditch

[Learn more about Pit Bull® 28](#)



**PIT BULL® 412**  
4" IPS - 12" DIPS (102mm - 305mm)  
Built For Tight Spaces

[Learn more about Pit Bull® 412](#)



**PIT BULL® 618**  
6" IPS - 18" OD (152mm - 457mm)  
Built For Tight Spaces

[Learn more about Pit Bull® 618](#)



**IN-DITCH 1600**  
20" OD - 65" OD (508mm - 1651mm)  
Designed For Large-Diameter Pipe

[Learn more about In-Ditch 1600](#)

### FIND A DISTRIBUTOR NEAR YOU.

McElroy's industry-leading fusion equipment can be purchased from distributors around the globe. Find one close to you.

[Underground / Construction](#)

[Mechanical / HVAC / Plumbing](#)

